

Strong Base with High Level of  
**STURDINESS, DURABILITY & SAFETY**



**Application of Product**



Seafood



Frozen & other food



Ice Cream



Dairy



Poultry



**Who We Are?**

Allwin Roto Plast was incorporated in the year 2006 as a partnership firm in Ahmedabad, Gujarat. Today Allwin has become a name synonymous to Quality and Innovative Products in Roto Moulding Plastic Industry.

**Why Allwin?**

We at Allwin always strive to give new products and work on new skills, insights and ideas. Innovation is the vital part of our development, improvement and progress. It is our values and business ethics that bind us together.

**Our Capabilities and Infrastructure**

Well-equipped infrastructure spread across the area of 26000 Sq. Feet with latest and advanced technology machines and highly skilled team of people.

**Our Specialities**

Insulated Ice Boxes Insulated Fish Tubs, Plastic Pallets, Bins and Crates. We also provide custom moulding products as per requirement of customers and end users.

**Application of Our Products**

Our products are been used in industry segments like Food Processing, Chemicals, Pharmaceutical, Dairy, FMCG, Sea Food Handling, Cold Storages Etc.

**Our Market**

Our products are widely used in India and we export to regions like Middle East, Asia Pacific, Europe and America.



**Roto Mould Plastic Pallets**

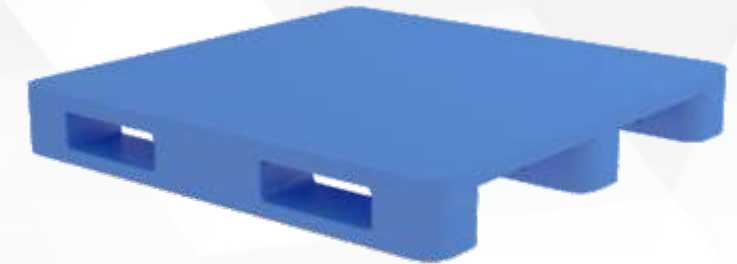
**(3 Runners, 2 Way Entry)**



| Model      | Size                    | Load Capacity |
|------------|-------------------------|---------------|
| ARP1212R32 | 1200 L x 1200 W x 160 H | Upto 3.5 Tons |
| ARP1210R32 | 1200 L x 1000 W x 160 H | Upto 3.0 Tons |
| ARP1010R32 | 1000 L x 1000 W x 150 H | Upto 2.0 Tons |
| ARP1008R32 | 1000 L x 800 W x 150 H  | Upto 1.5 Tons |

**(3 Runners, 4 Way Entry)**

| Model      | Size                    | Load Capacity |
|------------|-------------------------|---------------|
| ARP1212R34 | 1200 L x 1200 W x 160 H | Upto 3.5 Tons |
| ARP1210R34 | 1200 L x 1000 W x 160 H | Upto 3.0 Tons |



**(9 Legs, 4 Way Entry)**



| Model     | Size                    | Load Capacity |
|-----------|-------------------------|---------------|
| ARP1212L9 | 1200 L x 1200 W x 160 H | Upto 3.0 Tons |
| ARP1210L9 | 1200 L x 1000 W x 160 H | Upto 2.5 Tons |
| ARP1010L9 | 1000 L x 1000 W x 150 H | Upto 2.0 Tons |

**Application of Product**



Retail

Distribution

Export

Warehousing

Automotive

**Features**



Durable



Hygienic



-50 to 100 Degree



Easy to clean & Maintain

## Insulated Tubs



### ARP 70 S

|                                   |               |
|-----------------------------------|---------------|
| Capacity (Ltrs.)                  | : 70 L        |
| External Dimension (LxWxH in mm.) | : 750x490x390 |
| Internal Dimension (LxWxH in mm.) | : 685x425x285 |



### ARP 260 S

|                                   |               |
|-----------------------------------|---------------|
| Capacity (Ltrs.)                  | : 260 L       |
| External Dimension (LxWxH in mm.) | : 915x720x800 |
| Internal Dimension (LxWxH in mm.) | : 820x625x560 |

### ARP 100 S

|                                   |               |
|-----------------------------------|---------------|
| Capacity (Ltrs.)                  | : 100 L       |
| External Dimension (LxWxH in mm.) | : 815x535x440 |
| Internal Dimension (LxWxH in mm.) | : 740x470x335 |



### ARP 310 S

|                                   |               |
|-----------------------------------|---------------|
| Capacity (Ltrs.)                  | : 310 L       |
| External Dimension (LxWxH in mm.) | : 915x710x780 |
| Internal Dimension (LxWxH in mm.) | : 865x660x590 |



### ARP 220 S

|                                   |               |
|-----------------------------------|---------------|
| Capacity (Ltrs.)                  | : 220 L       |
| External Dimension (LxWxH in mm.) | : 970x585x655 |
| Internal Dimension (LxWxH in mm.) | : 900x520x515 |



### ARP 460 S

|                                   |                 |
|-----------------------------------|-----------------|
| Capacity (Ltrs.)                  | : 460 L         |
| External Dimension (LxWxH in mm.) | : 1230x1025x660 |
| Internal Dimension (LxWxH in mm.) | : 1166x961x430  |





## Insulated Tubs



### ARP 1000 S

|                                   |                 |
|-----------------------------------|-----------------|
| Capacity (Ltrs.)                  | : 1000 L        |
| External Dimension (LxWxH in mm.) | : 1470x1160x960 |
| Internal Dimension (LxWxH in mm.) | : 1390x1100x710 |



### ARP 660 S

|                                   |                 |
|-----------------------------------|-----------------|
| Capacity (Ltrs.)                  | : 660 L         |
| External Dimension (LxWxH in mm.) | : 1230x1025x825 |
| Internal Dimension (LxWxH in mm.) | : 1166x961x600  |



### ARP 1250 S

|                                   |                |
|-----------------------------------|----------------|
| Capacity (Ltrs.)                  | : 1250 L       |
| External Dimension (LxWxH in mm.) | : 1830x915x915 |
| Internal Dimension (LxWxH in mm.) | : 1760x840x845 |



### ARP 20-1

|                                   |               |
|-----------------------------------|---------------|
| Capacity (Ltrs.)                  | : 20 L        |
| External Dimension (LxWxH in mm.) | : 365x300x335 |
| Internal Dimension (LxWxH in mm.) | : 695x320x320 |

### ARP 22-1

|                                   |               |
|-----------------------------------|---------------|
| Capacity (Ltrs.)                  | : 22 L        |
| External Dimension (LxWxH in mm.) | : 470x380x225 |
| Internal Dimension (LxWxH in mm.) | : 430x332x160 |



### ARP 25-1

|                                   |               |
|-----------------------------------|---------------|
| Capacity (Ltrs.)                  | : 25* L       |
| External Dimension (LxWxH in mm.) | : 390x320x335 |
| Internal Dimension (LxWxH in mm.) | : 345x275x280 |



### ARP 35-1

|                                   |               |
|-----------------------------------|---------------|
| Capacity (Ltrs.)                  | : 35* L       |
| External Dimension (LxWxH in mm.) | : 390x320x435 |
| Internal Dimension (LxWxH in mm.) | : 345x275x370 |



### Application of Product



Seafood



Frozen & other food



Ice Cream



Dairy



Poultry



### ARP 35-C

|                                   |               |
|-----------------------------------|---------------|
| Capacity (Ltrs.)                  | : 35 L        |
| External Dimension (LxWxH in mm.) | : 600x420x260 |
| Internal Dimension (LxWxH in mm.) | : 550x370x180 |



### ARP 40-IB

|                                   |               |
|-----------------------------------|---------------|
| Capacity (Ltrs.)                  | : 40 L        |
| External Dimension (LxWxH in mm.) | : 350x350x680 |
| Internal Dimension (LxWxH in mm.) | : 280x280x610 |

### ARP 35-M

|                                   |               |
|-----------------------------------|---------------|
| Capacity (Ltrs.)                  | : 35 L        |
| External Dimension (LxWxH in mm.) | : 522x332x360 |
| Internal Dimension (LxWxH in mm.) | : 472x282x270 |



### ARP 50-IB\*

|                                   |               |
|-----------------------------------|---------------|
| Capacity (Ltrs.)                  | : 50 L        |
| External Dimension (LxWxH in mm.) | : 560x405x400 |
| Internal Dimension (LxWxH in mm.) | : 515x360x305 |



### ARP-R

|                                   |                   |
|-----------------------------------|-------------------|
| Capacity (Ltrs.)                  | : 5 L             |
| External Dimension (LxWxH in mm.) | : DIA 267 x H 192 |
| Internal Dimension (LxWxH in mm.) | : DIA 204 x H 145 |



### ARP 60-IB\*

|                                   |               |
|-----------------------------------|---------------|
| Capacity (Ltrs.)                  | : 60 L        |
| External Dimension (LxWxH in mm.) | : 575x425x425 |
| Internal Dimension (LxWxH in mm.) | : 510x360x375 |

\*Model available with plain & vending lid





**ARP 80-IB**

|                                   |               |
|-----------------------------------|---------------|
| Capacity (Ltrs.)                  | : 80 L        |
| External Dimension (LxWxH in mm.) | : 640x330x700 |
| Internal Dimension (LxWxH in mm.) | : 560x250x610 |



**ARP 110-IBVL\***

|                                   |               |
|-----------------------------------|---------------|
| Capacity (Ltrs.)                  | : 110 L       |
| External Dimension (LxWxH in mm.) | : 750x530x525 |
| Internal Dimension (LxWxH in mm.) | : 660x435x390 |

**ARP 97-IBVL\***

|                                   |               |
|-----------------------------------|---------------|
| Capacity (Ltrs.)                  | : 97 L        |
| External Dimension (LxWxH in mm.) | : 660x508x710 |
| Internal Dimension (LxWxH in mm.) | : 510x375x570 |



Locking facility



**ARP 120-IBVL\***

|                                   |               |
|-----------------------------------|---------------|
| Capacity (Ltrs.)                  | : 120 L       |
| External Dimension (LxWxH in mm.) | : 610x610x630 |
| Internal Dimension (LxWxH in mm.) | : 510x510x485 |



**ARP 150-IBCT\***

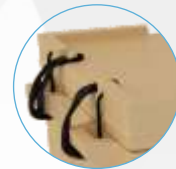
|                                   |               |
|-----------------------------------|---------------|
| Capacity (Ltrs.)                  | : 150 L       |
| External Dimension (LxWxH in mm.) | : 815x590x735 |
| Internal Dimension (LxWxH in mm.) | : 660x435x580 |



**ARP 100-IB**

|                                   |               |
|-----------------------------------|---------------|
| Capacity (Ltrs.)                  | : 100 L       |
| External Dimension (LxWxH in mm.) | : 780x555x455 |
| Internal Dimension (LxWxH in mm.) | : 690x465x355 |





Rubber Strap

**ARP 150-IB\***

|                                   |               |
|-----------------------------------|---------------|
| Capacity (Ltrs.)                  | : 150 L       |
| External Dimension (LxWxH in mm.) | : 830x585x590 |
| Internal Dimension (LxWxH in mm.) | : 730x485x460 |

**ARP 150-IBTVLL**

|                                   |               |
|-----------------------------------|---------------|
| Capacity (Ltrs.)                  | : 150 L       |
| External Dimension (LxWxH in mm.) | : 905x502x725 |
| Internal Dimension (LxWxH in mm.) | : 750x370x580 |



**ARP 250-IBVLL**

|                                   |                |
|-----------------------------------|----------------|
| Capacity (Ltrs.)                  | : 250 L        |
| External Dimension (LxWxH in mm.) | : 1040x600x765 |
| Internal Dimension (LxWxH in mm.) | : 865x485x610  |

\*Model available with plain & vending lid



**ARP 60 DB**

|                       |          |
|-----------------------|----------|
| Size                  | Capacity |
| 300 L x 300 W x 680 H | 60 Ltrs. |



**ARP 80 DB**

|                       |          |
|-----------------------|----------|
| Size                  | Capacity |
| 430 L x 430 W x 875 H | 80 Ltrs. |



**ARP 110 DB**

|                       |           |
|-----------------------|-----------|
| Size                  | Capacity  |
| 515 L x 515 W x 920 H | 110 Ltrs. |



**ARP DB S**

|                        |
|------------------------|
| Size                   |
| 525 L x 360 W x 1040 H |

**ARP DB SS**

|                         |
|-------------------------|
| Size                    |
| 1090 L x 360 W x 1040 H |

**ARP DB SSS**

|                         |
|-------------------------|
| Size                    |
| 1760 L x 360 W x 1040 H |

**Application of Product**



Seafood



Frozen & other food



Ice Cream



Dairy



Poultry

# Allwin<sup>®</sup> roto plast

An ISO 9001:2008 certified company



## ARP 240 & 120 DBW

| Size                   | Capacity  |
|------------------------|-----------|
| 750 L x 570 W x 1010 H | 240 Ltrs. |
| 570 L x 500 W x 950 H  | 120 Ltrs. |

## ARP 260 & 210 C

| Size                  | Capacity  |
|-----------------------|-----------|
| 932 L x 615 W x 523 H | 260 Ltrs. |
| 810 L x 530 W x 583 H | 210 Ltrs. |



### Application of Product



Commercial



Hospital



Garden



Industrial



Residential

## OUR NETWORK



CITY NAME +91 11111 22222

CITY NAME +91 11111 22222

CITY NAME +91 11111 22222

CITY NAME +91 11111 22222

CITY NAME +91 11111 22222

CITY NAME +91 11111 22222

CITY NAME +91 11111 22222

CITY NAME +91 11111 22222

CITY NAME +91 11111 22222

CITY NAME +91 11111 22222

CITY NAME +91 11111 22222

CITY NAME +91 11111 22222

CITY NAME +91 11111 22222

CITY NAME +91 11111 22222